



ELLER COLLEGE OF MANAGEMENT  
Management Information Systems

**2019-20**  
**GRADUATE  
EMPLOYMENT  
REPORT**



THE UNIVERSITY  
OF ARIZONA  
**Eller MIS**

# About Eller MIS

## Program Rankings



**#1**

**GRADUATE MIS PROGRAM, PUBLIC**  
*U.S. News & World Report, 2021*

**#1**

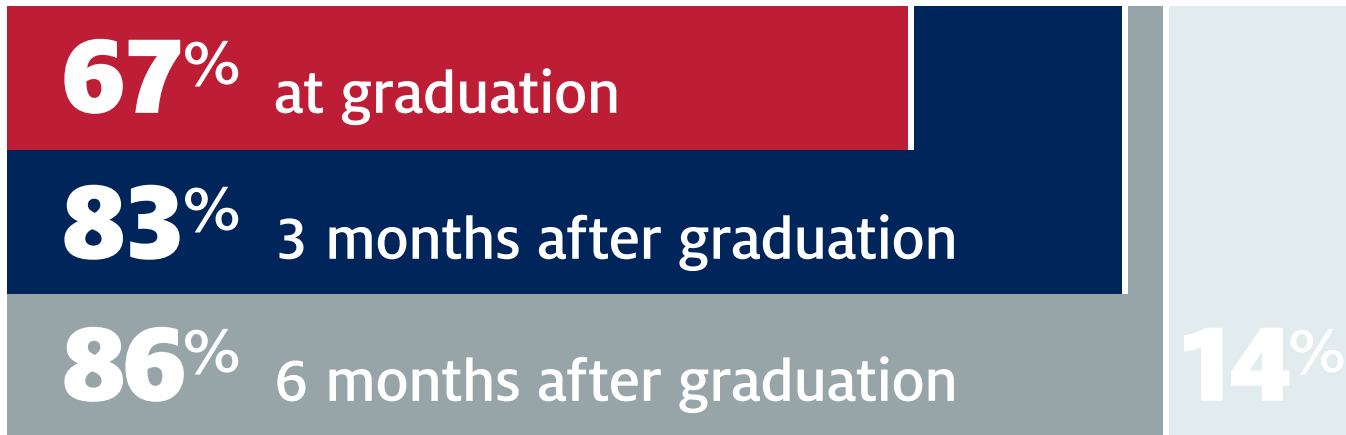
**ONLINE GRADUATE MIS PROGRAM, PUBLIC**  
*U.S. News & World Report, 2021*

**#2**

**UNDERGRADUATE MIS PROGRAM, PUBLIC**  
*U.S. News & World Report, 2021*

**A TOP-5 INSTITUTION SINCE RANKINGS BEGAN IN 1989**  
*U.S. News & World Report*

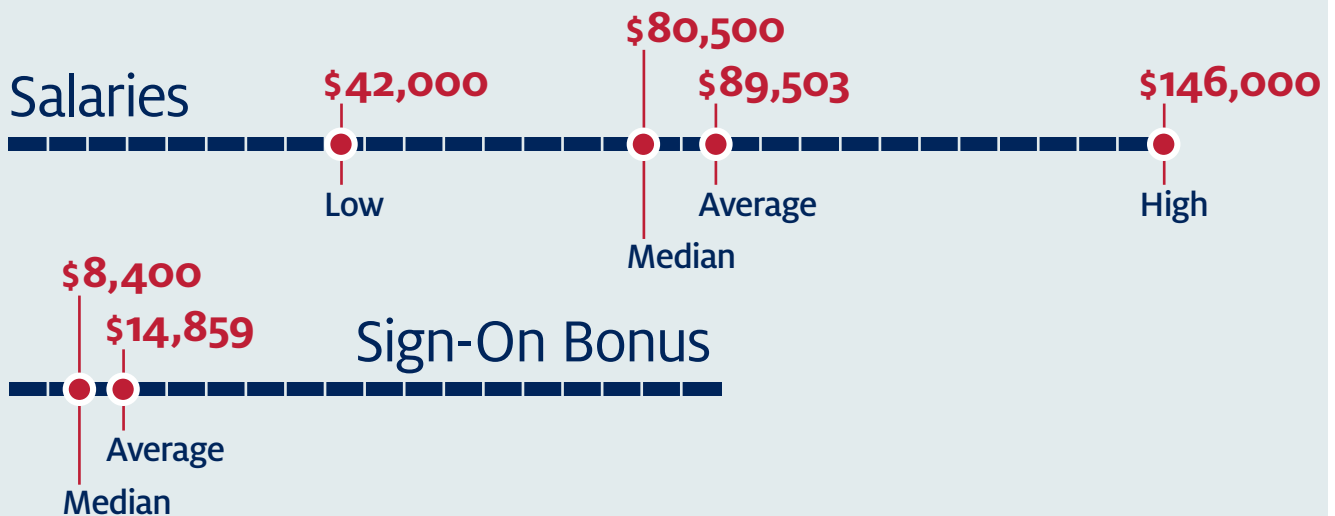
# Career Placement 2019-20



   EMPLOYED  SEEKING EMPLOYMENT



# Compensation



## Acceptance by Function

Project/Product Management	29%
Consulting	19%
Software Engineering	14%
Data Analytics/Science	11%
Business Analytics	11%
IT Operations	8%
Cybersecurity	8%

## Acceptance by Industry

Technology	30%
Consulting	22%
Financial Services	16%
Healthcare	5%
Retail	3%
Other	24%



# Internships Class of 2020

Internships are a critical component in building real-world experience with direct application to career paths. Students apply concepts they learn in the classroom while discovering company cultures and additional networking opportunities.

## 100% Engagement\*

### *Internships by Function*

Project/Product Management	37%
Data Analytics/Science	27%
Cybersecurity	16%
Consulting	6%
Business Analytics	6%
Software Engineering	4%
IT Operations	4%

\*This includes paid, unpaid and faculty run projects.

## 45 Participating Companies

### *Internships by Industry*

Technology	45%
Financial Services	16%
Retail	11%
Consulting	9%
Healthcare	2%
Other	17%

## Employers

### *for both internship and full-time*

- American Express
- Cisco
- Albertson's
- Host Analytics
- Visa
- Amazon
- Solera Health
- Walmart Labs
- F5
- Natsoft Coporation
- Catalyst Connect
- PwC
- Penny Mac
- GM
- Ericsson
- SAP SuccessFactors
- Accenture
- Deloitte
- KPMG
- Raytheon
- ExxonMobil
- Microsoft

# Connect With Us

The MIS Career Management team will work with you to develop a customized plan that will give you access to the talent your organization needs.

Options include:

- **Career treks**
- **Company sponsored events**
- **Information sessions**
- **Interview rooms**
- **Job postings**
- **Mock interviews**
- **On-campus interviewing**
- **Resumes**
- **UA career fairs**
- **Video conferencing**



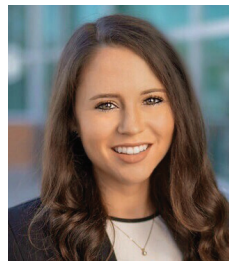
**Wendy Wienhoff**

*Director*

*MIS Career Management*

**wwienhoff@arizona.edu**

**520-621-5807**



**Sadie Randall**

*Assistant Director*

*MIS Career Management*

**sadierandall@arizona.edu**

**520-621-3837**



**Eller MIS**

THE UNIVERSITY OF ARIZONA  
ELLER COLLEGE OF MANAGEMENT

**Management Information Systems**

[mis.eller.arizona.edu](http://mis.eller.arizona.edu)

1130 E Helen Street  
McClelland Hall 430  
Tucson AZ 85721-0108

520-621-2748  
[contactmis@eller.arizona.edu](mailto:contactmis@eller.arizona.edu)  
[facebook.com/EllerMIS](https://facebook.com/EllerMIS)